



FLEXBOX Box bodies for van and truck chassis



DRY



COOL



FREEZE



HUMBAUR
BOX BODIES



STANDARD EQUIPMENT/TECHNICAL DATA – VANS

FlexBox DRY

- ▶ 30 mm sandwich panels
- ▶ Insulated roof fitted as standard
- ▶ Double-hinged rear doors
- ▶ Rear portal & auxiliary frame hot-dip galvanised
- ▶ LED interior lighting with motion detector
- ▶ Sliding tie-down points on the floor
- ▶ Step with handgrip at the rear
- ▶ Plastic mudguards with dirt collectors
- ▶ Lighting according to German Road Traffic Regulations (StVZO)



The FLEXBOX superstructures are checked by TÜV NORD according to Code XL.



FlexBox COOL

- ▶ 60 mm sandwich panels
- ▶ 65 mm insulated floor
- ▶ Double-hinged rear doors
- ▶ Rear portal & auxiliary frame hot-dip galvanised
- ▶ LED interior lighting with motion detector
- ▶ Step with handgrip at the rear
- ▶ Plastic mudguards with dirt collectors
- ▶ Lighting according to German Road Traffic Regulations (StVZO)

Carrier aggregates, Konvekta, Mitsubishi and Thermo King



FlexBox FREEZE

- ▶ 80 mm front wall & roof
- ▶ 65 mm side wall panels
- ▶ 120 mm insulated floor
- ▶ 85 mm double-hinged rear doors
- ▶ Rear portal & auxiliary frame hot-dip galvanised
- ▶ LED interior lighting with motion detector
- ▶ Step with handgrip at the rear
- ▶ Plastic mudguards with dirt collectors
- ▶ Lighting according to German Road Traffic Regulations (StVZO)

Carrier aggregates, Konvekta, Mitsubishi and Thermo King



The FLEXBOX superstructures are certified in accordance with ATP and HACCP regulations.

FLEXBOX DRY – PERFECT FOR DRY GOODS



Large selection of structure dimensions available – please don't hesitate to contact us!

The Humbaur FlexBox DRY is impressive thanks to well thought-out detail solutions, versatile application options and their far-reaching flexibility. The extremely light superstructures thanks to an unbeatable payload advantage.

The Humbaur FlexBox is therefore the perfect partner for any transportation needs, regardless of whether its general cargo, roll containers or packages.

FlexBox DRY can optionally be equipped with a variety of accessories. What's more, it is available in a lightweight version with an aluminium subframe and sandwich panels with GRP outer layer. Even a light commercial vehicle becomes a payload heavyweight.



FLEXBOX DRY – EXAMPLES OF STRUCTURE WEIGHT

Internal dimensions (L x W x H) in mm	3435 x 2035 x 2085	3935 x 2035 x 2085	4435 x 2035 x 2085
Steel construction weight in kg	665	735	805
GRP structure weight in kg	370	405	440

FLEXBOX COOL AND FREEZE – PERFECT FOR TEMPERATURE-CONTROLLED GOODS



Large selection of structure dimensions available – please don't hesitate to contact us!

Whether its fresh or frozen goods, the FlexBox COOL AND FREEZE offers the right solution for every type of sensitive cargo. To protect the front and side walls, a 150 mm high aluminium scuff plate is installed in the interior.

As a result, the Humbaur FlexBox COOL and FREEZE is ready for transporting chilled and frozen goods and is therefore the ideal partner for any temperature-controlled transportation needs, regardless of whether its roll containers, E2 crates or pallets.

Weight-optimised variants are also available for the FlexBox COOL and FREEZE so as to achieve a maximum payload. Of course, the FlexBoxes from this series are tested and certified according to HACCP & ATP standards.

In addition, the FlexBox COOL and FREEZE can optionally be equipped with a wide range of accessories.

FLEXBOX COOL – EXAMPLES OF STRUCTURE WEIGHT

Internal dimensions (L x W x H) in mm	3370 x 2070 x 2065	3870 x 2070 x 2065	4370 x 2070 x 2065
Steel construction weight in kg	860	945	1035
GRP structure weight in kilograms	580	640	700

FLEXBOX FREEZE – EXAMPLES OF STRUCTURE WEIGHT

Internal dimensions for FREEZE (L x W x H) in mm	3320 x 2050 x 1970	3820 x 2050 x 1970	4320 x 2050 x 1970
Steel construction weight in kg	945	1040	1135
GRP structure weight in kilograms	630	680	740

STANDARD EQUIPMENT/TECHNICAL DATA – TRUCKS

FlexBox DRY

- ▶ 30 mm sandwich panels
- ▶ Insulated roof fitted as standard
- ▶ Double-hinged rear doors
- ▶ Rear portal & auxiliary frame hot-dip galvanised
- ▶ LED interior lighting with motion detector
- ▶ Sliding tie-down points on the floor
- ▶ Step with handgrip at the rear
- ▶ Plastic mudguards with dirt collectors
- ▶ Lighting according to German Road Traffic Regulations (StVZO)



The FLEXBOX superstructures are checked by TÜV NORD according to Code XL.



FlexBox COOL

- ▶ 60 mm sandwich panels
- ▶ 65 mm insulated floor
- ▶ Double-hinged rear doors
- ▶ Rear portal & auxiliary frame hot-dip galvanised
- ▶ LED interior lighting with motion detector
- ▶ Step with handgrip at the rear
- ▶ Plastic mudguards with dirt collectors
- ▶ Lighting according to German Road Traffic Regulations (StVZO)

Carrier aggregates, Konvekta, Mitsubishi and Thermo King



FlexBox FREEZE

- ▶ 80 mm front wall & roof
- ▶ 65 mm side wall panels
- ▶ 120 mm insulated floor
- ▶ 85 mm double-hinged rear doors
- ▶ Rear portal & auxiliary frame hot-dip galvanised
- ▶ LED interior lighting with motion detector
- ▶ Step with handgrip at the rear
- ▶ Plastic mudguards with dirt collectors
- ▶ Lighting according to German Road Traffic Regulations (StVZO)



Carrier aggregates, Konvekta, Mitsubishi and Thermo King



The FLEXBOX superstructures are certified in accordance with ATP and HACCP regulations.

FLEXBOX DRY – PERFECT FOR DRY GOODS



Large selection of structure dimensions available – please don't hesitate to contact us!

The HUMBAUR FlexBox DRY is the perfect partner for all transport requirements – including in the truck sector. Whether its general cargo, roll containers or packages. It is impressive thanks to well thought-out detail solutions, versatile application options and their far-reaching flexibility. The extremely robust superstructures impress with unbeatable resilience and longevity.

The FlexBox DRY can be used with a variety of optional accessories. In addition, it is also available in a lightweight version with weight-optimised sandwich panels, meaning the amount of payload can be increased even further.



FLEXBOX DRY – EXAMPLES OF STRUCTURE WEIGHT

Internal dimensions (L x W x H) in mm	6185 x 2485 x 2285	7285 x 2485 x 2285	8435 x 2485 x 2285
Steel construction weight in kg	1300	1550	1720
GRP structure weight in kg	1020	1230	1350

FLEXBOX COOL AND FREEZE – PERFECT FOR TEMPERATURE-CONTROLLED GOODS



Large selection of structure dimensions available – please don't hesitate to contact us!

The Humbaур FlexBox COOL and FREEZE is ready for transporting chilled and frozen goods and is therefore the ideal partner for all temperature-controlled transportation needs, regardless of whether its roll containers, E2 crates or pallet goods. To protect the front and side walls, a 150 mm high aluminium scuff plate is installed in the interior.

The FlexBox COOL and FREEZE are available in weight-optimised versions for maximum payload.

A multi-chamber solution with different temperature zones in a single vehicle is also possible with FlexBox FREEZE.

Of course, the FlexBoxes from this series are tested and certified according to HACCP & ATP standards.

In addition, the FlexBox COOL and FREEZE can optionally be equipped with a wide range of accessories.

FLEXBOX COOL – EXAMPLES OF STRUCTURE WEIGHT

Internal dimensions (L x W x H) in mm	6170 x 2470 x 2265	7270 x 2470 x 2265	8470 x 2470 x 2265
Steel construction weight in kg	1550	1780	2050
GRP structure weight in kilograms	1200	1380	1600

FLEXBOX FREEZE – EXAMPLES OF STRUCTURE WEIGHT

Internal dimensions for FREEZE (L x W x H) in mm	6220 x 2450 x 2270	7320 x 2450 x 2270	8520 x 2450 x 2270
Steel construction weight in kg	1790	2060	2340
GRP structure weight in kilograms	1430	1650	1870

OPTIONAL ACCESSORIES



Wooden floors 18/21/24/27 mm



GRP skylight



Integrated or patch lashing strips with locking bar(s)



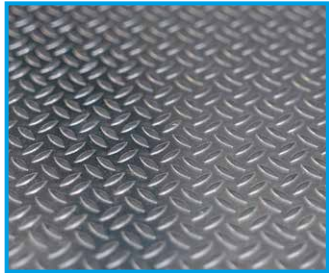
Side flap



Side doors DRY



Side doors COOL/FREEZE



Barley grain aluminium floor



Rubber buffers (optional)



Scuff Plate 150/300 mm



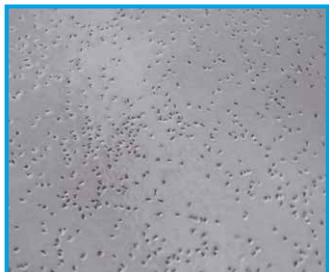
Third brake light with integrated reversing camera



Roof spoiler



DRY liftgate



Marohtaan® floor coating



LED light bar inside



Rear step



Monitor for the reversing camera in the cab



Cold curtain



COOL/FREEZE liftgate

Additional accessories and individual design solutions on request!

PERFECT FOR ANY PURPOSE



E-Mobility

The HUMBAUR FlexBox scooter on the WORK L Streetscooter is the perfect companion for the emission-free last mile.



Butchers/catering

The FlexBox transports your goods safely and "cool" to the next location. Partial unloading can take place through an optional side door, without resulting in a large temperature loss.



Truck chassis superstructures

The FlexBox can be constructed as DRY and COOL/FREEZE variants on a multitude of truck chassis.

FS BE TRAILER

The HUMBAUR FlexBox as a tough-loading trailer, with driving license class "B" and "BE", enables trains with a permissible maximum weight of up to 7 tons to be controlled.



Flat bottom chassis

Despite its compact design, it offers a large loading capacity. And the approx. 300 mm lower than standard chassis. Solutions are available for both dry goods and cooling solutions.



Bakers/laundrettes/gardeners

The HUMBAUR FlexBox mounted on a 13" AL-KO chassis is the ideal companion for bakers, laundrettes and gardeners. Goods can be easily pushed into the structure using a folding ramp or complete access ramp.

Removal helpers

The HUMBAUR FlexBox is an absolute payload giant in the lightweight version with GRP outer layer.



TEAM FLEXBOX



Contact partner for box bodies

FlexBox Sales

Mercedesring 1 · 86368 Gersthofen, Germany
 Phone +49 821 24929-957
 Email: flexbox@humbaur.com



Markus Wiedemann
 Head of Sales

Phone +49 821 24929-142
 Mob. +49 160 71900-62
 Email: m.wiedemann@humbaur.com



Ralph Henning
 Sales Department

Tel. +49 821 24929-172
 Email: r.henning@humbaur.com



Lisa Hertl
 Sales Department

Tel. +49 821 24929-152
 Email: l.hertl@humbaur.com



Alicia Paa
 Sales Department

Tel. +49 821 24929-158
 Email: a.paa@humbaur.com