

FLEXBOX



MAKES IT HAPPEN



ANycARGO HUMBAUR ONESOLUTION

Our
BOX BODIES



humbaur.com

DRY FREIGHT BOX BODIES

The Humbaур FlexBox DRY is impressive thanks to well thought-out detail solutions, versatile application options and its far-reaching flexibility. The extremely light box bodies stand out due to an unbeatable payload advantage. The HUMBAUR FlexBox is therefore the perfect partner for any transportation needs, regardless of whether it's general cargo, roll containers or packages.

FlexBox DRY can optionally be equipped with a variety of accessories. What's more, it is available in a lightweight version with an aluminium sub-frame and sandwich panels with GFRP outer layer. Even a light commercial vehicle can be a payload heavyweight.

Lighting as per German Road Traffic Regulations (StVZO)



Lashing points in a groove

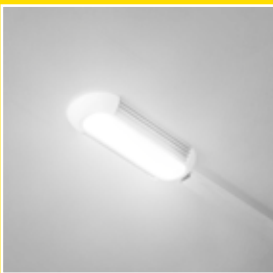


Single-piece floor panels in a range of thicknesses prevent height differences when joining different thicknesses. (Only up to a GVW of 3.5 t & not possible for all special sizes)

Humbaур recommendation:

SCREEN-PRINTED FLOOR

- 15 mm** up to 3.5 t
- 18 mm** 3.5–7.5 t
- 21 mm** 7.5–12 t
- 24 mm** 14 t and up



Interior lighting



Handgrip and step as a climbing aid

Double-wing door with stainless steel hinges & espagnolette lock



FLEXBOX HGV box bodies

The HUMBAUR FlexBox DRY is the perfect partner for all transport requirements — including in the truck sector — regardless of whether you're transporting general cargo, roll containers or packages. It impresses thanks to well thought-out detail solutions, versatile application options and its far-reaching flexibility. The extremely robust box bodies impress with unbeatable resilience and longevity.

Rear portal welded & hot-dip galvanised



The FLEXBOX box bodies are tested by TÜV NORD in accordance with Code XL.

STANDARD EQUIPMENT

30-mm sandwich panels
Insulated roof fitted as standard
Double-wing rear doors
Rear portal and sub-frame hot-dip galvanised
LED interior lighting with motion detector
Adjustable lashing points on the floor
Step with handgrip at the rear
Plastic mudguards with dirt collectors
Lighting as per German Road Traffic Regulations (StVZO)

PUR FERRO

13 kg/m²

PUR ALU

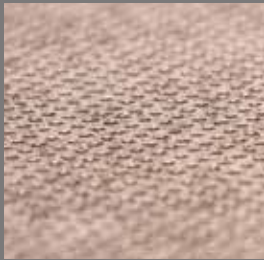
7 kg/m²

PUR LIGHT

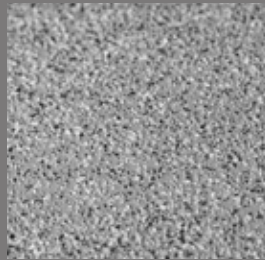
4 kg/m² Only up to 7.5 t

OUR RANGE OF ACCESSORIES

FLOOR

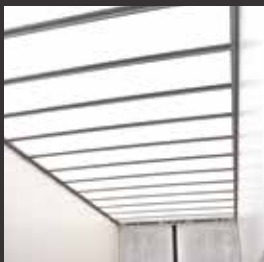


Wooden floor 15/18/21/24/27 mm



Plastic-coated floor

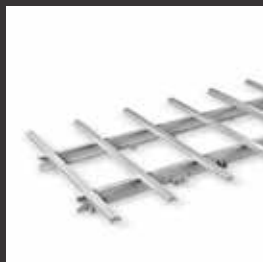
EQUIPMENT



GFRP skylight



Roof spoiler



Bolted aluminium sub-frame



Side doors with step



Rubber buffer



Scuff plate 150/300 mm



Side impact protection



Monitor for the reversing camera in the cab



Third brake light with integrated reversing camera



LED strips in the interior



Rear step

In addition to the **extensive standard equipment** for our trailers and vehicle bodies, we offer a **wide selection of accessories to suit each model**. This means that you can configure just the right solution for your transport needs according to your **individual requirements** and you can grow alongside your transport requirements.



Liftgate with top tailgate
(different manufacturers)



Barred tie-rail



Front wall reinforcement



TIP

The HUMBAUR FlexBox as a through-loading trailer enables drivers with driving license class "B" and "BE" to drive trains with a permissible maximum weight of up to 7 tonnes to be controlled.



Slotted tie-rail



Locking bar



Airline rail

BREAKDOWN SERVICE

A breakdown may result in severe consequences for your business. That's why it's important that your vehicles are back in action quickly in the event of a problem and keep your business moving. With Humba 24/7, not only do you quickly receive roadside assistance, you also benefit from comprehensive coverage against unexpected costs.

- 800 workshops throughout Germany
- 5500 workshops in Europe
- 24-hour service, 365 days a year
- We repair over 97% of all breakdowns on site
- Attractive price/performance ratio
- Special terms on tyre costs in the event of a breakdown
- Over 90% customer satisfaction

HUMBAUR 24/7



FLEXBOX DRY COOL FREEZE

ANYCARGO HUMBAUR

FLEXBOX DRY

SUPER-LIGHT CONSTRUCTION

For maximum payload

HIGH-QUALITY CORROSION PROTECTION

For high durability

IDEAL & FLEXIBLE CONSTRUCTION FOR ANY APPLICATION

FLEXBOX COOL

FLEXBOX FREEZE

SOPHISTICATED COOLING AND FREEZING CONCEPTS

TESTED FOR FOOD SAFETY

MAINTAINS A SEAMLESS COOLING CHAIN

HACCP and ATP certified



The transport solution for a variety of chassis and vehicle types from different brand manufacturers.

- HGV chassis**
- Van chassis**
- Van platform chassis**

Cab with low-frame chassis

Electric Pickups

Cargo bikes

Electromobility

Addax	Iveco	Quantron
BAYK	MAN	Renault
Citroen	Mercedes	Streetscooter
DAF	Nissan	Tropos
EVUM	Nexus	Urban Mobility
Fiat	Opel	Volvo
Ford	Peugeot	VW

ONESOLUTION



eMobility
0,00g
CO₂
EMISSION
FREE
VEHICLES

Deliver now!

Sustainable and environmentally friendly.
With emission-free vehicles
in the eMobility sector.



FLEXBOX

Maximum payload

Customised structure dimensions

Weight-optimised lightweight construction

Versatile and flexible

COOL/FREEZE BOX BODIES

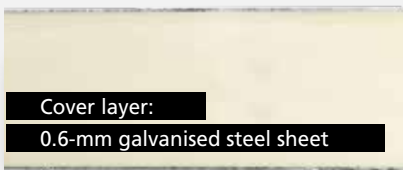
Whether its fresh or frozen goods, the FlexBox COOL AND FREEZE offers the right solution for every type of sensitive cargo. To protect the front and side walls, a 150-mm-high aluminium scuff plate is installed in the interior.

As a result, the Humbaer FlexBox COOL and FREEZE is ready for transporting chilled and frozen goods and is therefore the ideal partner for any temperature-controlled transportation needs, regardless of whether it's roll containers, E2 crates or pallets. Weight-optimised variants are also available for the FlexBox COOL and FREEZE so as to achieve a maximum payload.

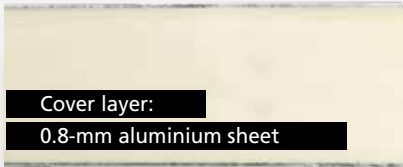
Of course, the FlexBoxes from this series are tested and certified according to HACCP & ATP standards. In addition, the FlexBox COOL and FREEZE can optionally be equipped with a wide range of accessories.



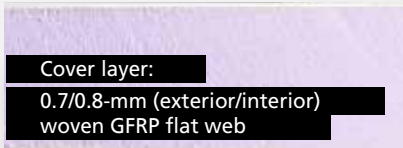
PUR FERRO



PUR ALU



PUR LIGHT



STANDARD EQUIPMENT COOL

- 60-mm sandwich panels
- 65-mm insulated floor
- Double-wing rear doors
- Sub-frame hot-dip galvanised, rear portal made from stainless steel
- LED interior lighting with motion detector
- Step with handgrip at the rear
- Plastic mudguards with dirt collectors
- Lighting as per German Road Traffic Regulations (StVZO)

Units from Carrier, Mitsubishi and Thermo King

STANDARD EQUIPMENT FREEZE

- 80-mm front wall and roof
- 65-mm side wall panels
- 120-mm insulated floor
- 85-mm double-hinge rear doors
- Sub-frame hot-dip galvanised, rear portal made from stainless steel
- LED interior lighting with motion detector
- Step with handgrip at the rear
- Plastic mudguards with dirt collectors
- Lighting as per German Road Traffic Regulations (StVZO)

Units from Carrier, Mitsubishi and Thermo King



The FLEXBOX box bodies are certified in accordance with the rules of ATP and HACCP.



Double-wing doors including espagnolette lock on both doors



150-mm scuff plate



Insulated floor including anti-slip coating



Interior lighting

FLEXBOX HGV box bodies

The Humber FlexBox COOL and FREEZE is ready for transporting chilled and frozen goods and is therefore the ideal partner for all temperature-controlled transportation needs, regardless of whether it's roll containers, E2 crates or pallet goods.

To protect the front and side walls, a 150-mm-high aluminium scuff plate is installed in the interior. The FlexBox COOL and FREEZE is available in weight-optimised versions for maximum payload.

A multi-chamber solution with different temperature zones in a single vehicle is also possible with FlexBox FREEZE.

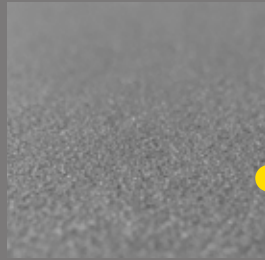


OUR RANGE OF ACCESSORIES ❄️

FLOOR



Barley grain aluminium floor



LightGrip floor

i Weight optimisation:

Anti-slip coating, with cross beams laid in foam that are made of aluminium instead of steel.

EQUIPMENT



Scuff plate 300/450 mm



Liftgate with top tailgate (different manufacturers)



Liftgate in front of the tailgate (different manufacturers)



Side doors with step



Rubber buffer



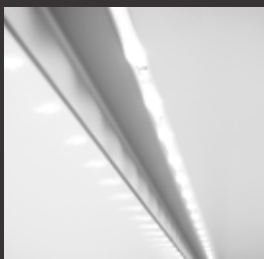
Slotted tie-rail with locking bar



Barred tie-rail



Airline rail



LED strips in the interior



Roof spoiler

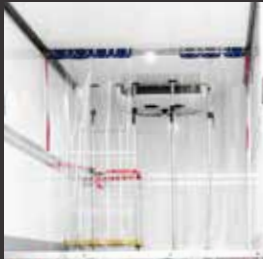


Monitor for the reversing camera in the cab + third brake light with integrated reversing camera



Ceiling rail

In addition to the **extensive standard equipment** for our trailers and vehicle bodies, we offer a **wide selection of accessories to suit each model**. This means that you can configure just the right solution for your transport needs according to your **individual requirements** and you can grow alongside your transport requirements.



1/2/3-piece cold curtain



3-piece insulating curtain



Multi-chamber systems (as an example)
Other versions available on request



Side impact protection



Locking bar

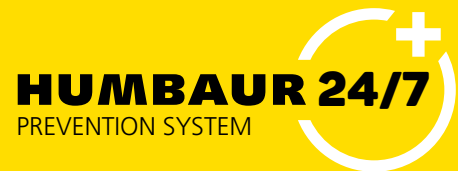


Cooling units from different manufacturers

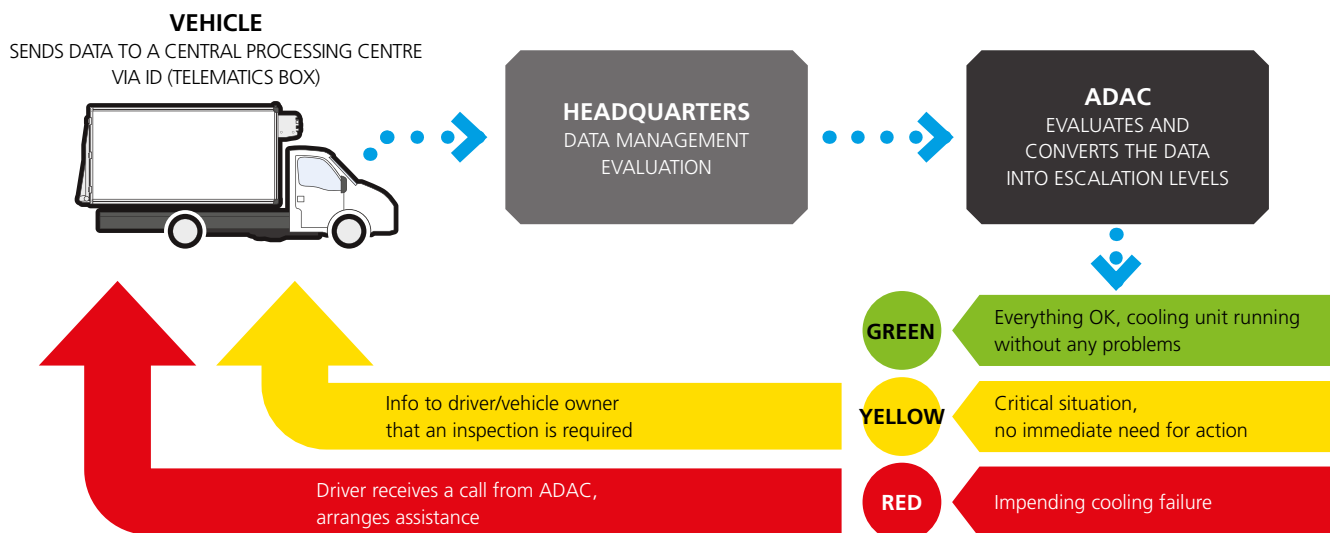
We select a suitable variant for your vehicle body from a wide range of refrigeration units from well-known manufacturers.

HUMBAUR 24/7 PREVENTION SYSTEM

- Increase efficiency: Avoid long vehicle downtimes — quickly back in action. Notifications about critical situations allow workshop visits to be scheduled.
- Increase in capacity: Employee capacity freed up by outsourcing technical data monitoring
- Cost savings: Prevent breakdowns and high follow-up costs, as well as reduce wear and maintenance costs



HUMBAUR 24/7 PREVENTION SYSTEM – HOW IT WORKS





More information is
available online at

humbaur.com/en/dealersservice/downloads/

Your Humbaur contact in your area

Do you have any questions about this product?
We look forward to hearing from you.

Contact Humbaur:

Contact us by phone on **+49 (0)821 24 929 - 957**
or by email at **flexbox@humbaur.com**

* Illustrations are similar. Our general terms of delivery and payment, which can be viewed at <https://www.humbaur.com/en/general-conditions-and-terms/>, apply. These apply only to Germany. Subject to change without notice. Errors excepted. All information is provided without guarantee.
Images: Humbaur GmbH, Adobe Stock,
Article 009.00026/Last updated 09/22